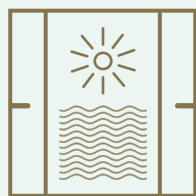


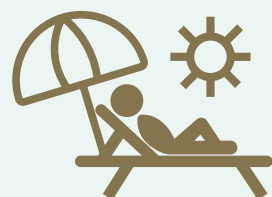
LIV
LUX

D U B A I M A R I N A





Apartments feature a minimum of 3 Meter Ceiling Heights – with floor to ceiling windows allowing for natural sunlight & stunning views



A full floor of luxurious amenities allowing for resort style living in the heart of Dubai Marina



Breathtaking views of Dubai Marina, Palm Jumeirah and the Arabian sea



**LIV
LUX**

INTRODUCING THE CROWN JEWEL OF DUBAI MARINA

LIV LUX

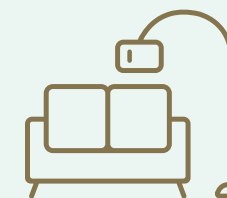
LIV LUX – 47 GLEAMING STORIES OF REFINED LUXURY
WITH BREATHTAKING VIEWS OF THE ARABIAN SEA,
PALM JUMEIRAH, AND DUBAI MARINA

FLAWLESS TO THE LAST DETAIL

LIVUAE.COM



24 hour valet service
for all guests and
residents



Designed with maximum efficiency
in mind, offering more useable
space for our residents



Fully fitted Premium
European kitchens with the
latest innovations



LIV BETWEEN THE BEACH & DUBAI MARINA

The tower enjoys a prime location nestled between the majestic Arabian Gulf and the vibrant sophistication of Dubai Marina.

The areas
new address for
Ultra-Luxury
Oceanfront living.



LUXURY COMES TO DUBAI MARINA – LIV LUX –

A collection of prime residences in Dubai's most sought after community, DUBAI MARINA.

With luxurious fixtures, fittings and finishes throughout – **LIV LUX** is a rare balance where luxury living commingles with 5 Star Amenities, Location, and Views.





GRANDEUR FROM
THE GROUND UP



LIV THE LUX LIFESTYLE

AT 47 STORIES, EVERY RESIDENCE IN **LIV LUX** OPTIMIZES WATERFRONT VIEWS WITH FULL HEIGHT WINDOWS AND FANTASTIC OPEN-AIR BALCONIES.

LIV LUX takes its inspiration from the very lifestyle it creates – enjoy stunning ocean views from the serenity of your own private balcony.

REDEFINING THE SKYLINE



LOCATION

DUBAI MARINA

All within 5 minutes

DINING, LEISURE & SHOPPING

The Beach, JBR
Emirates Golf Club & TopGolf Dubai
Montgomerie Golf Club
Ain Dubai - Bluewaters
Dubai Marina Mall

5 STAR HOTELS

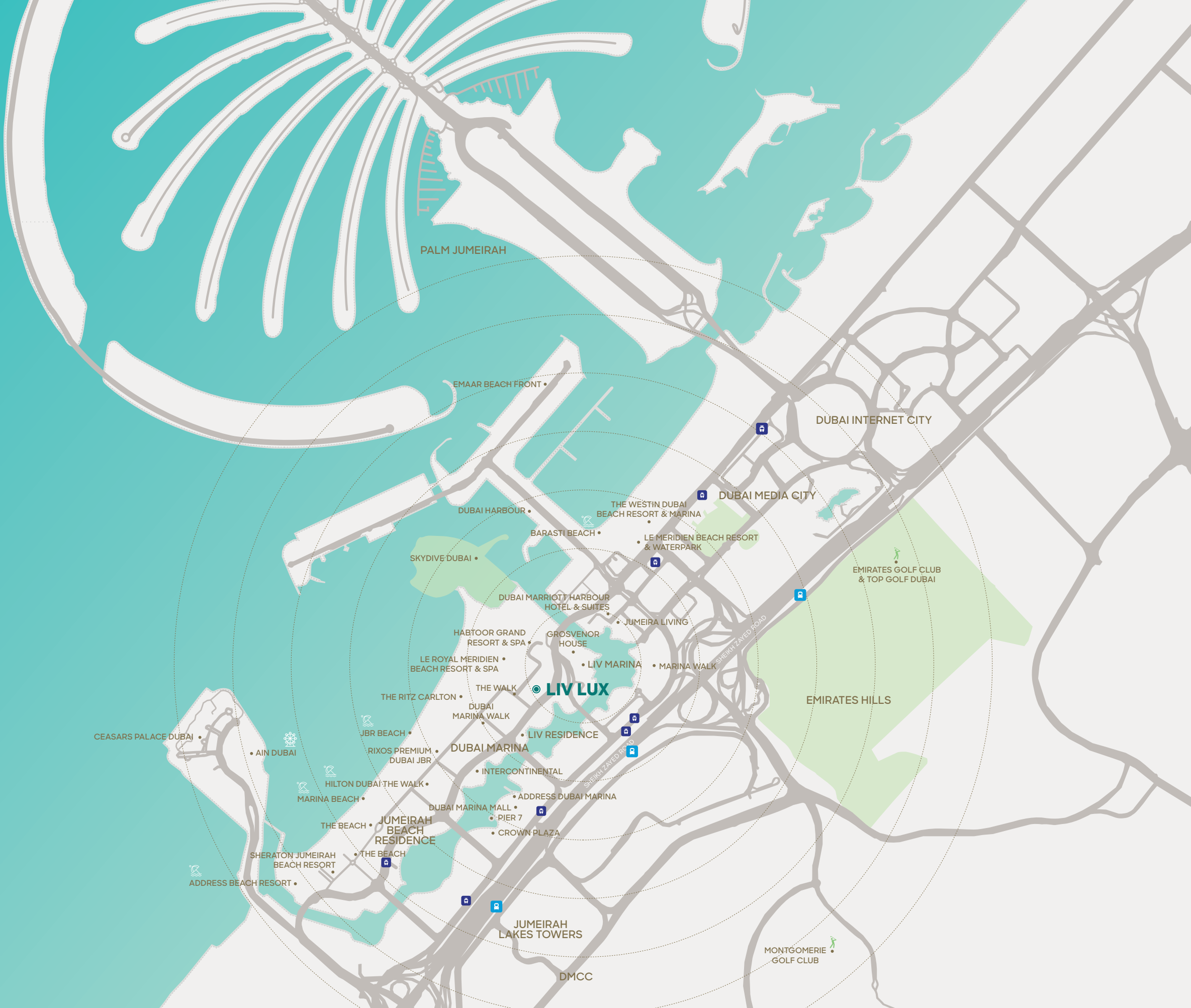
Le Royal Meridien
Ritz Carlton
Intercontinental
Grosvenor House
The Address JBR & Marina
Jumeirah Living Marina

TRANSPORT

Dubai Metro
Dubai Tram
RTA Water Taxi
Sheikh Zayed Road

OTHER NEARBY DESTINATIONS

Dubai International Airport - 22 mins
Al Maktoum International Airport - 22 mins
Mall of the Emirates - 7 mins
Dubai Hills Mall - 10 mins
Palm Jumeirah - 5 mins
DIFC - 18mins
Atlantis Aquaventure - 9 mins
Dubai Parks & Resorts - 15 mins





The Most Luxurious Address in Dubai Marina

A STUNNING DROP OFF, MANNED WITH WHITE GLOVE VALET PARKING SERVICES

The expansive 5 star hotel style entrance features -24 hour valet service and exudes refined luxury from the moment you approach the iconic tower.



LIV LUX EMBODIES LUXURY THE MOMENT YOU ENTER . . .

A Spacious grand lobby to welcome residents and your guests. Residents enjoy the use of the **LIV LUX** Reception, manned with 24 hour security, concierge, and guest services.



LIV LUX – BOUTIQUE LUXURY LIVING

The grand double height lobby is detailed to perfection.

The opulent entrance is a preview of the luxurious fixtures, fittings and finishes that can be found throughout. Lobby, Lifts, & Corridors exude a stunning luxury hotel style ambiance.



KITCHENS & LIVING ROOMS

Elegant Open Style LUX Living

Each expansive residence features flowing, open concept floor plans. Framed with a minimum of 3 meter high floor to ceiling windows. Engaging views set the backdrop to open living and dining areas.

Clean lines and timeless fixtures lend an air of modernity to neutral undertones, punctuated by touches of vibrance.

Contemporary Custom Cabinetry matched with the finest European Fixtures.





BEDROOMS & BATHROOMS

Intelligent Design Meets Grand Living

Thoughtfully planned bedrooms accompanied by stunning waterfront views, well curated wardrobes, storage and shelving ensure that both style and function coexist.

Custom designed bathrooms fitted with the finest in European Brands such as Villeroy & Boch, with unrelentless attention to form and function, cabinets with storage, and contemporary walk in showers.





The Signature Collection

THE SIGNATURE COLLECTION AT **LIV LUX** COMPRISES AN ARRAY OF SUPER LUXURIOUS RESIDENCES.

Each Signature unit has been thoughtfully designed to elevate Luxury to a new level.

Built in joinery, high end kitchens with upgraded appliances. Custom elevated ceilings with immaculate lighting, your Signature Home comes with the utmost care and attention to detail, providing residents with the elegance and upscale level of comfort they deserve.



**LIV
LUX**

Premium Finishes
& Bespoke Designs set
a new benchmark for
Luxury to cater to
a Discerning Few.

LIVUAE.COM





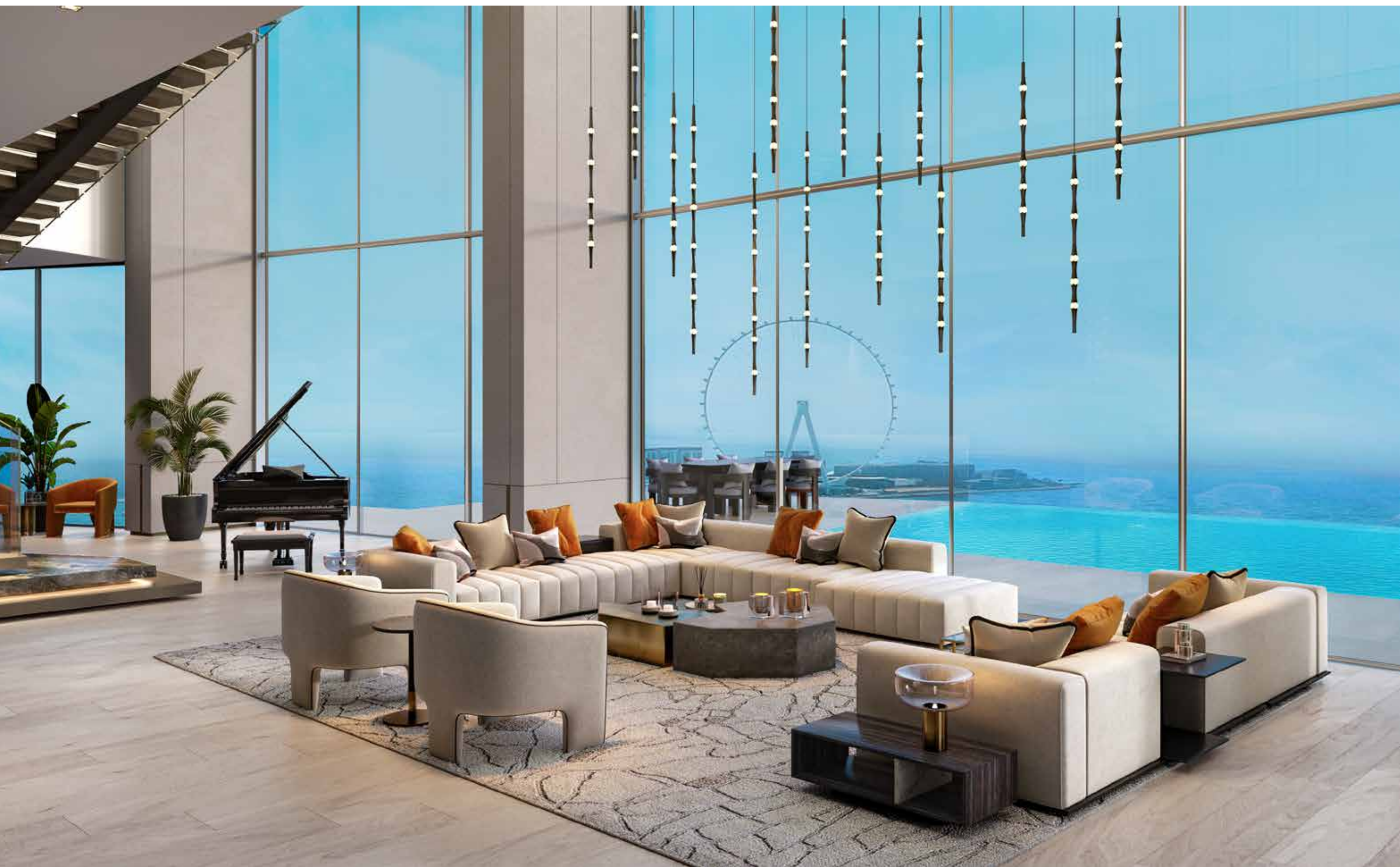
The LIV LUX Penthouse Collection

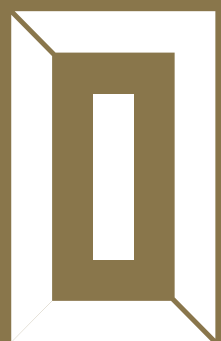
A NEW LEVEL OF LUXURY LIVING IN DUBAI MARINA

Striking from every angle.

Bespoke Duplex Penthouses ranging from 7250 to 15250 square feet. Our most Limited Collection of Exclusive Homes, all with infinity pools, stunning skyline views and entertainment spaces.

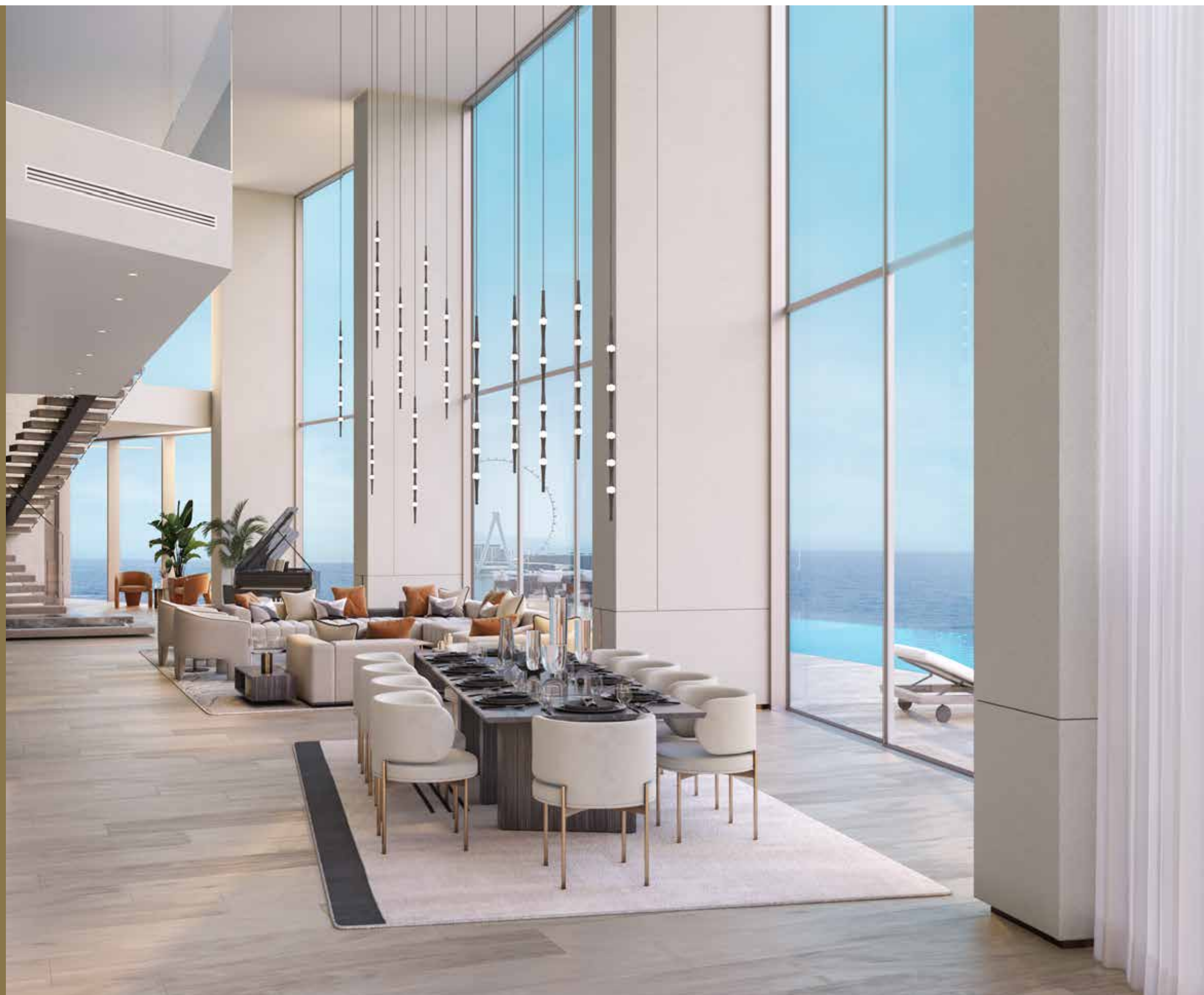
Double Height Living Rooms with Light pouring in from your waterfront views. Oversized bedrooms with lounging spaces, walk in wardrobes, and bathrooms steeped in Luxury – Grandeur in Every Space.





LIV
LUX

LIVUAE.COM







Private Massage Areas and Zen Gardens, Outdoor Jacuzzi & Sun-Lounging
all in your own private terraces of your Penthouse.



The Ultimate in Opulence

LIV LUX PENTHOUSES

Ultra Premium Show Kitchens with stunning Italian marble with contemporary counters.

Bedrooms finished to perfection, with natural wood floors, custom lighting, walk in wardrobes, built in make up tables and living & lounge areas.





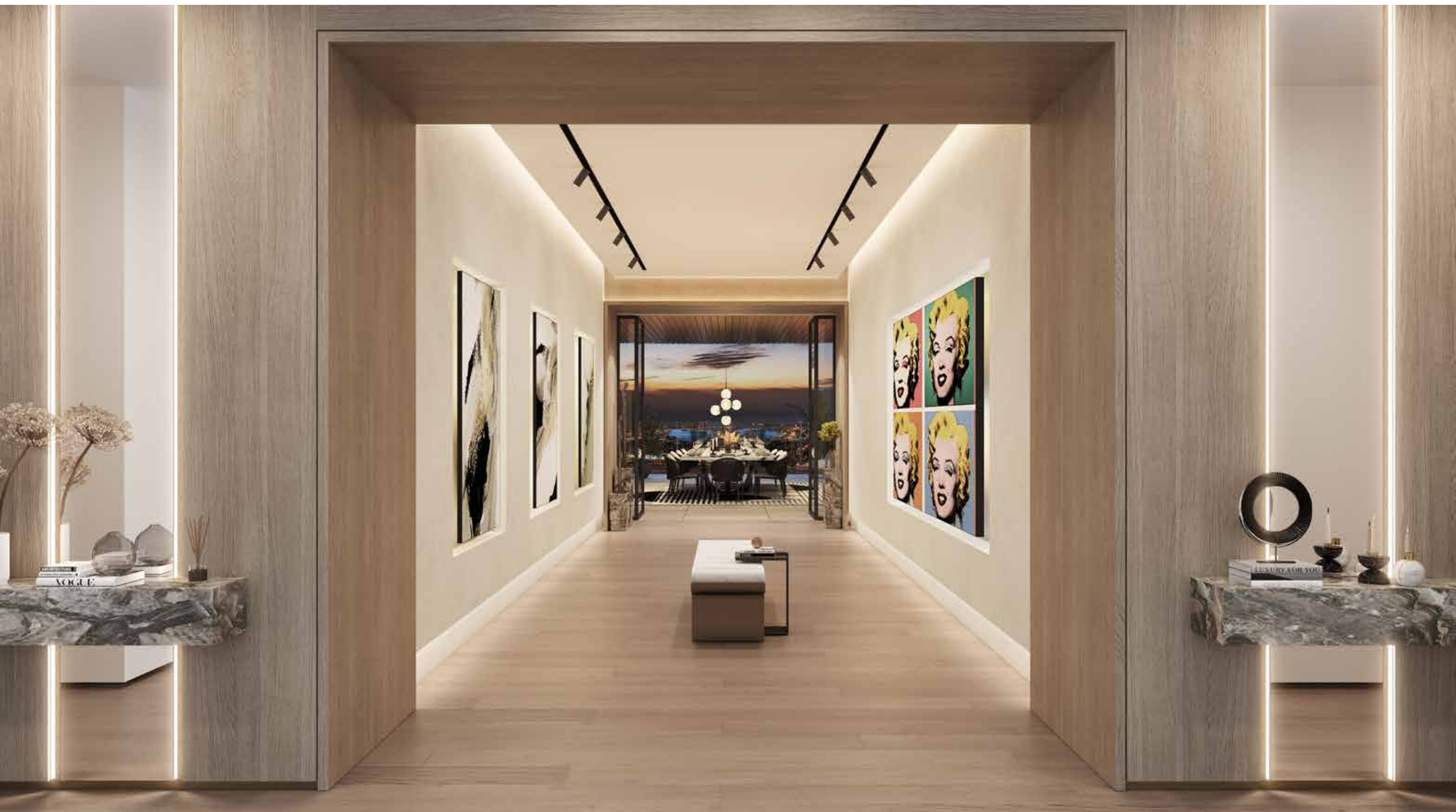
The LIV Superlux Penthouse

LUXURY TO ANOTHER LEVEL

Outdoor Entertainment Spaces to rival the world's best.

Enter your space through your own private ART Gallery, an exquisite showcase.

Penthouse Terraces with lounge & dining areas, and entertainment counters to take in spectacular sunrise and sunsets.



Your own private ART Gallery, an exquisite showcase to display the finest art pieces in the world.



LIV LUXURIOUSLY

THE ENTIRE 7TH FLOOR OF **LIV LUX** IS ALLOCATED TO PREMIUM INDOOR AND OUTDOOR AMENITIES

An unmatched selection of options places LIV LUX in a class of its own. Practice on your own private Golf Putting Green, Experience the world's fastest growing sport with a round of Padel. Cook at our Outdoor BBQ & Dining areas, or unwind at the Outdoor Gardens. Enjoy the outdoor cinema, or cool off and sunlounge at the resort sized swimming pool.

Experience breathtaking waterfront views while using the latest training equipment in the fitness center, private yoga rooms, or retreat into the

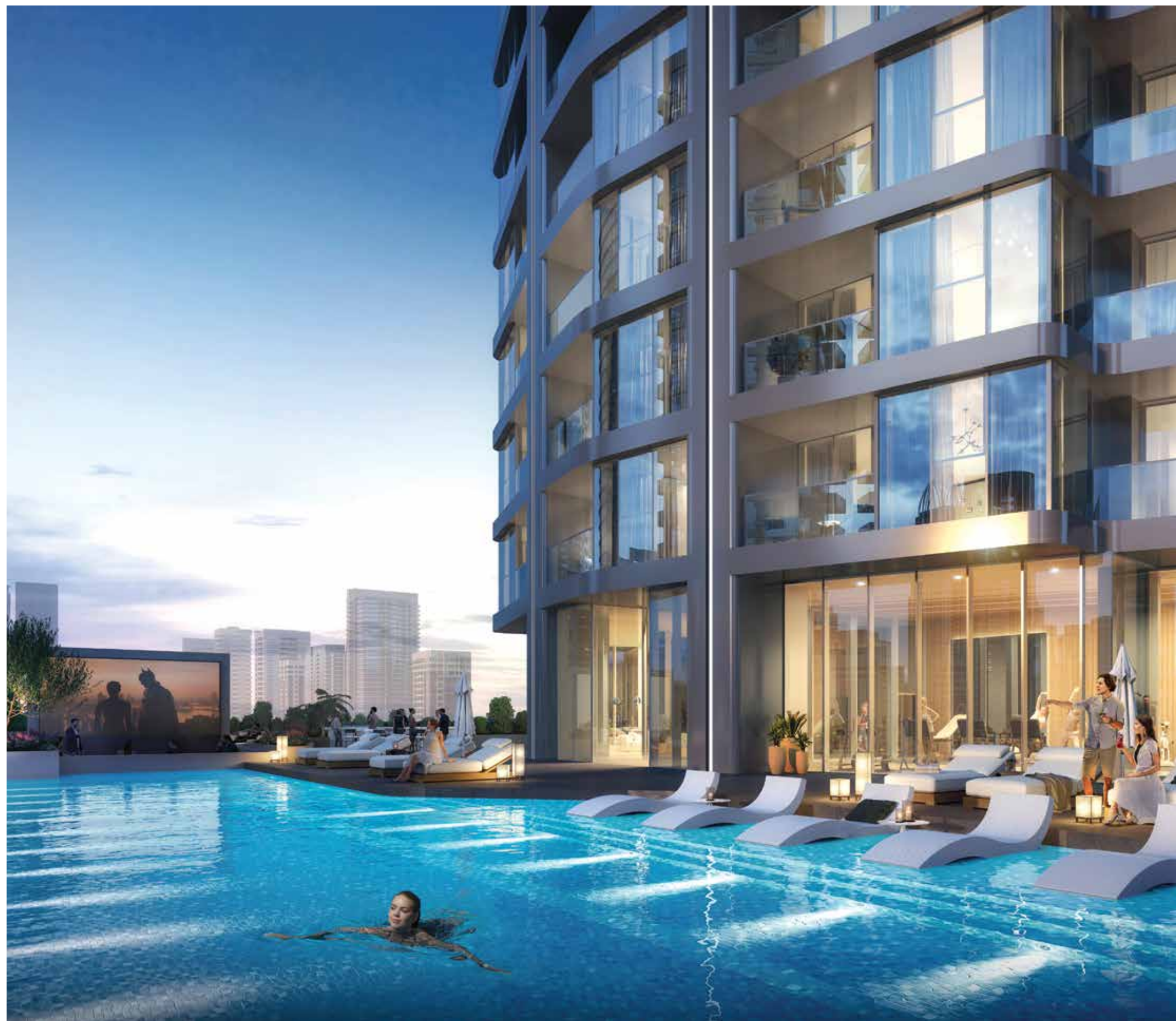
dedicated spa with sauna and steam rooms, with changing facilities for ladies and gents.

















Invite your own beauticians to the Private Salon available to Residents Only.

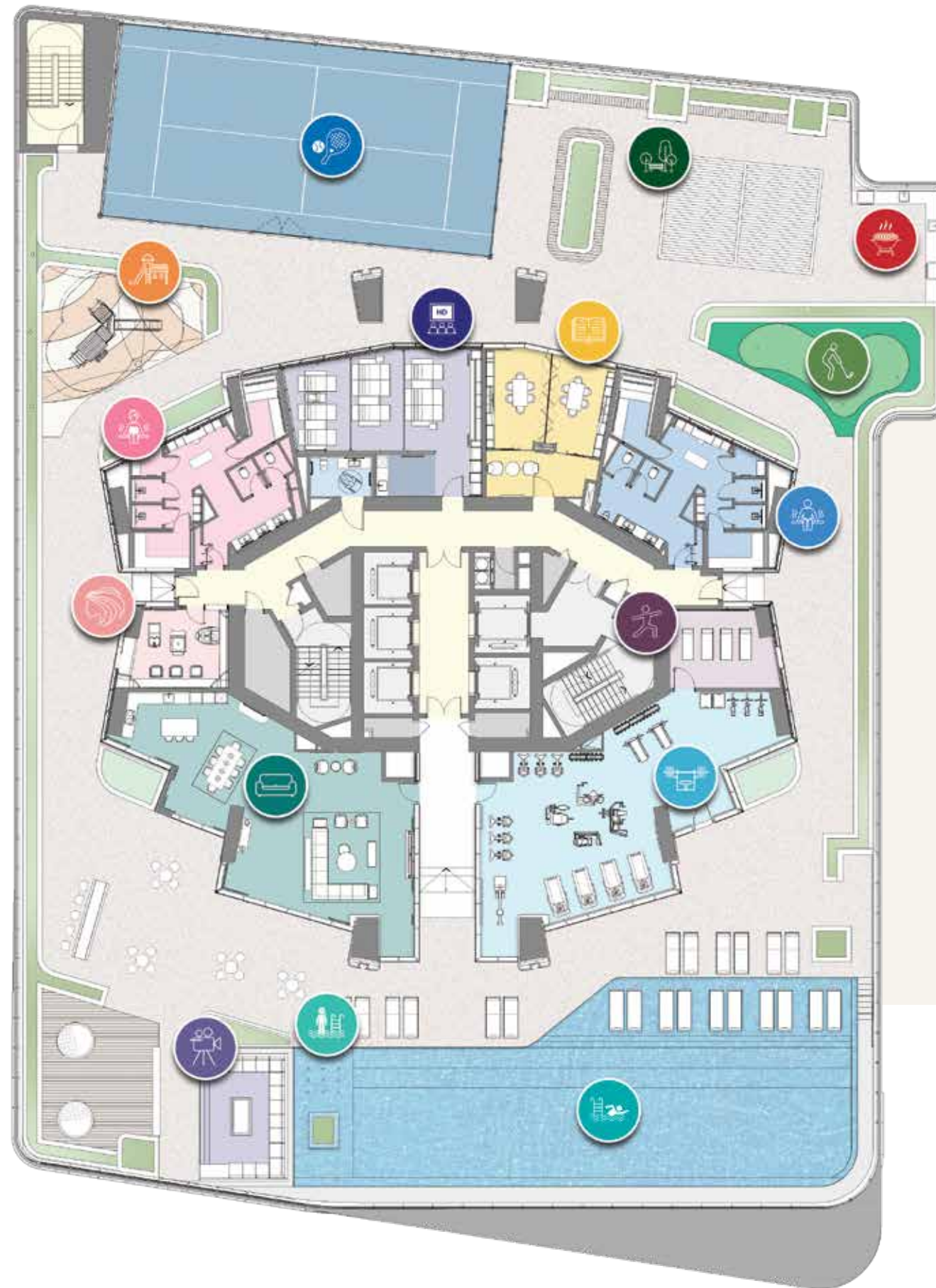
Entertain or Host Private Events in the Luxury Residents Lounge, or have access to well equipped conference rooms. End your day with a movie in the state of the art Indoor Theatre, equipped with the latest in video equipment & Plush Seating.

A FULL FLOOR OF AMENITIES

OVER 27,000 SQ FT. OF AMENITIES EXCEEDS ALL EXPECTATIONS



-  Residents Lounge
-  Residents Beauty Salon
-  Ladies' Steam & Sauna
-  Indoor Movie Theatre
-  Conference & Study Rooms
-  Men's Steam & Sauna
-  Yoga Studio
-  Indoor Gym
-  Infinity Pool
-  Kids Splash Pool
-  Outdoor Cinema
-  Kids Play Area
-  Padel Court
-  Residence Gardens
-  BBQ & Dining Area
-  Golf Putting Green



AMENITIES FLOORPLAN

Residents Lounge

Invite family and friends to your dedicated residents lounge. A luxurious extension of your own residence located at the center of the amenities floor.

Finished in the same style and design as the residences, the lounge has natural stone flooring, custom kitchen cabinetry, large islands with bar seating, dining area and a comfortable tv seating area.

This beautifully designed lounge enables residents and guests to entertain in a multitude of ways. Enjoy breakfast overlooking the Dubai Marina or host evening canapes and cocktails.



Residents Beauty Salon

Our Private Beauty rooms offer residents and their guests a luxurious space to enjoy treatments in the comfort of their own home.

Whether a blow dry before an evening out or a relaxing treatment after a long day this space allows residents to be pampered on a daily basis.



Cinema Room Conference Room



Yoga Room

Health and wellness
blend seamlessly with our
revitalizing Yoga Studios
- allow for wellbeing with
a view in a peaceful and
tranquil setting.



Dedicated SPA with Sauna & Steam Room

Retreat into the dedicated ladies
and men's steam and sauna room
offering you a chance to unwind
and rejuvenate.





LIV FIT.

Enjoy the 24 hour convenience of a fully equipped State of the Art Fitness Center overlooking the blue Marina Waters. With the latest, cardio, strength and free-weight equipment.



Outdoor Dining Areas & BBQ
Residents Gardens



Padel Court
Golf Putting Green





LIV
LUX

THE PINNACLE OF EXCLUSIVITY

LIV IN THE NEW ICON
AMONG THE DUBAI SKYLINE

A state-of-the-art combination of incredible views, exceptional architecture, gracious layouts and hotel style services makes **LIV LUX** the ultimate oasis.

[LIVUAE.COM](https://livuae.com)

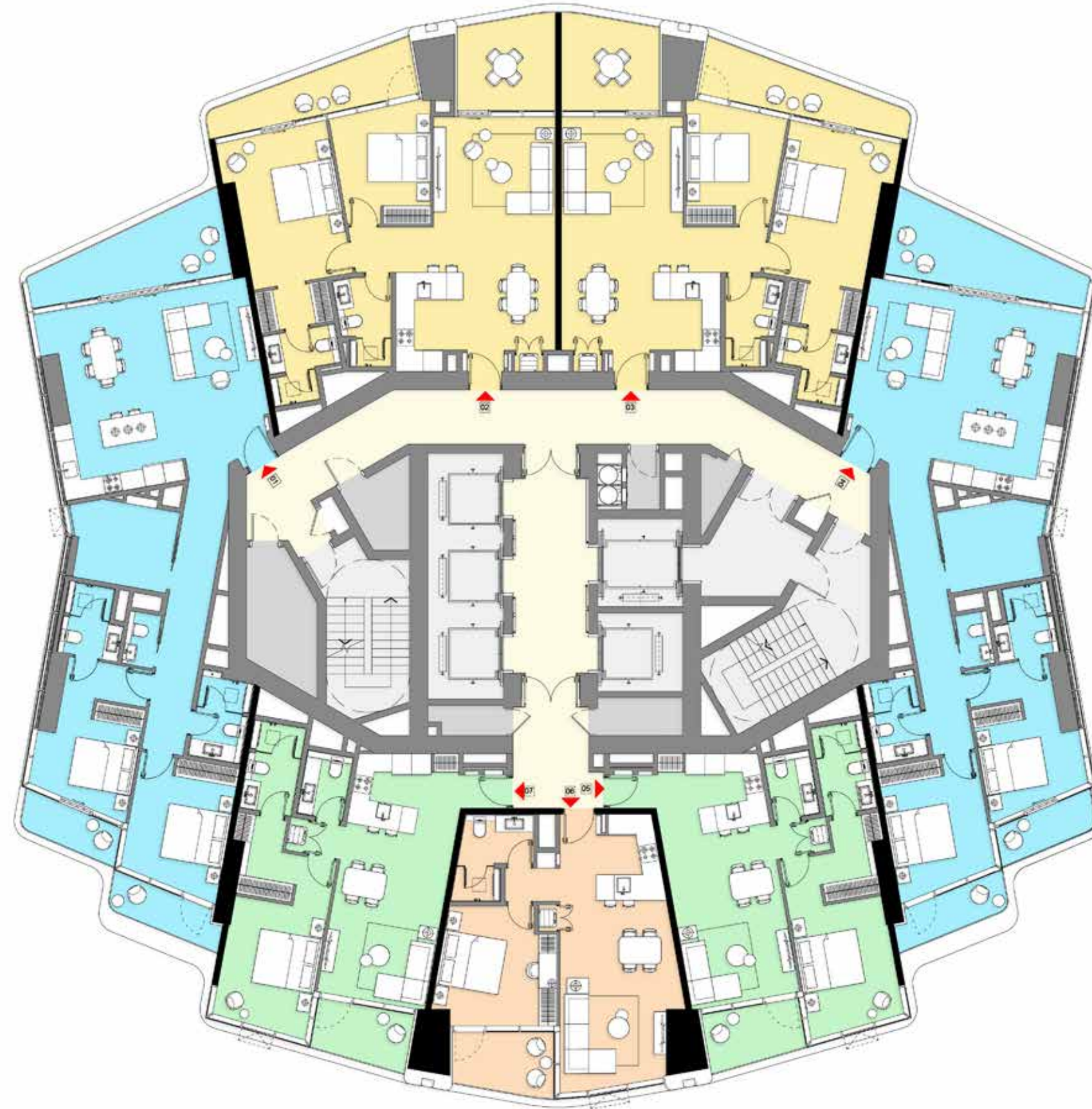


TYPICAL FLOORPLANS

APARTMENTS FEATURE
SEA/PALM VIEWS AND/OR MARINA VIEWS

1 BR & 2 BR Residences
2 BR, 3 BR & 4 BR Signature Residences
Duplex Penthouses





TYPICAL FLOORPLANS

Residential Levels

Levels 08 - 15

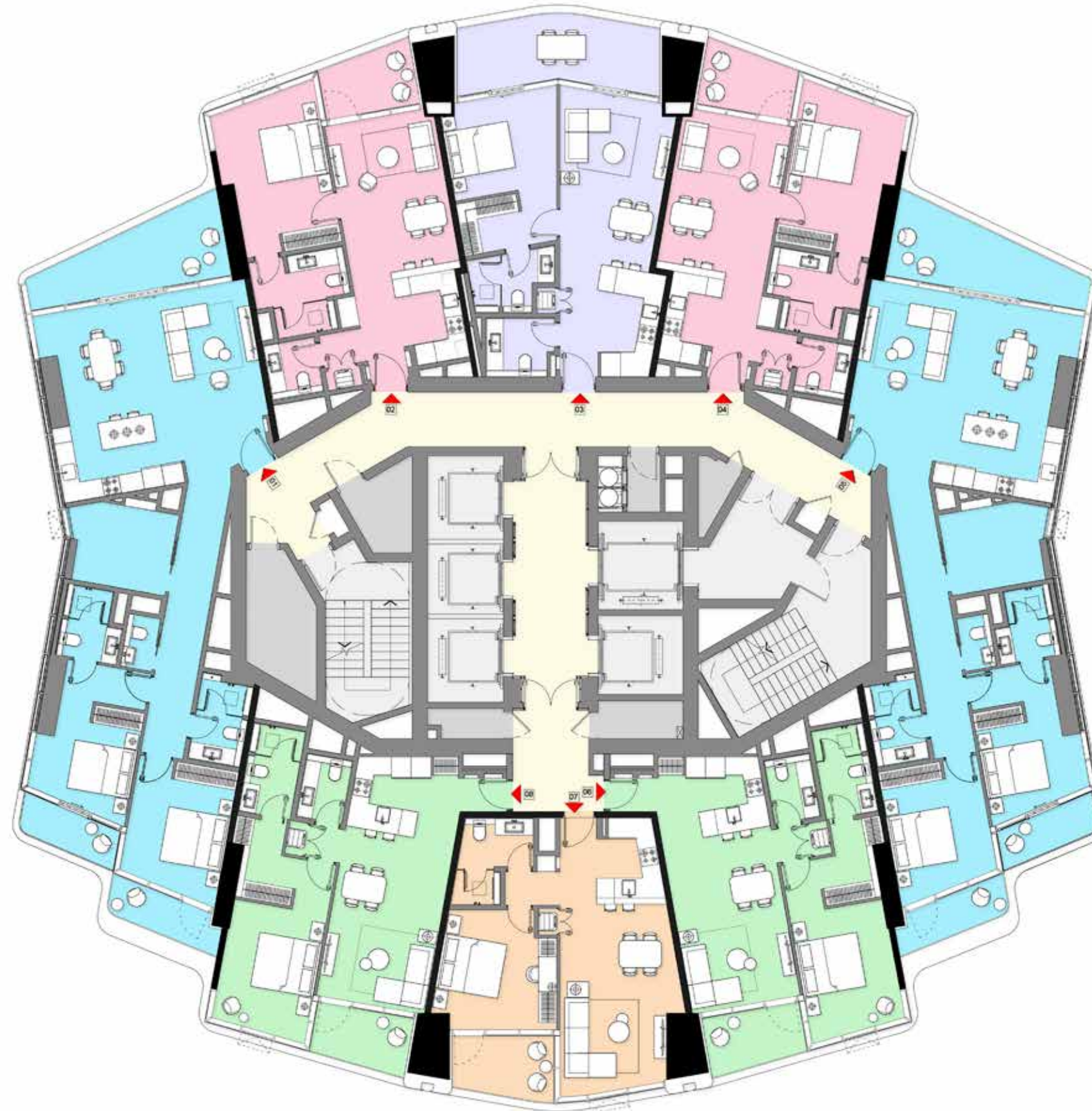
1 & 2 Bedroom Units

1 BR-A	(Units 06)
1 BR-C1	(Units 05, 07)
2 BR-A	(Units 02, 03)
2 BR-C	(Units 01, 04)



LIV
LUX





TYPICAL FLOORPLANS

Residential Levels

Levels 16 - 31

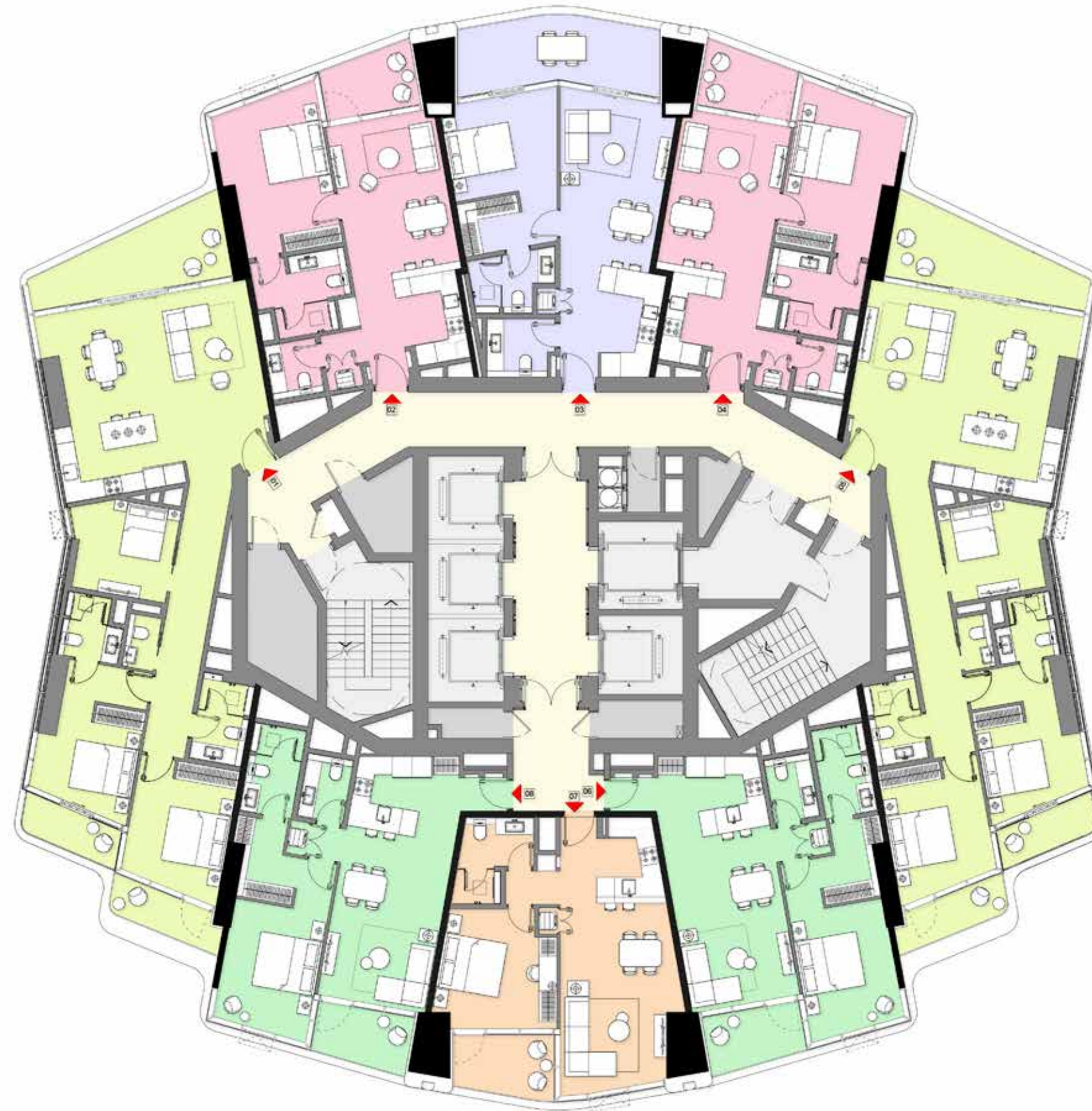
1 & 2 Bedroom Units

1BR-A	(07)
1BR-B1	(02, 04)
1BR-C1	(06, 08)
1BR-C2	(03)
2BR-C	(01, 05)



LIV
LUX





TYPICAL FLOORPLANS

Residential Levels

Levels 32 - 33

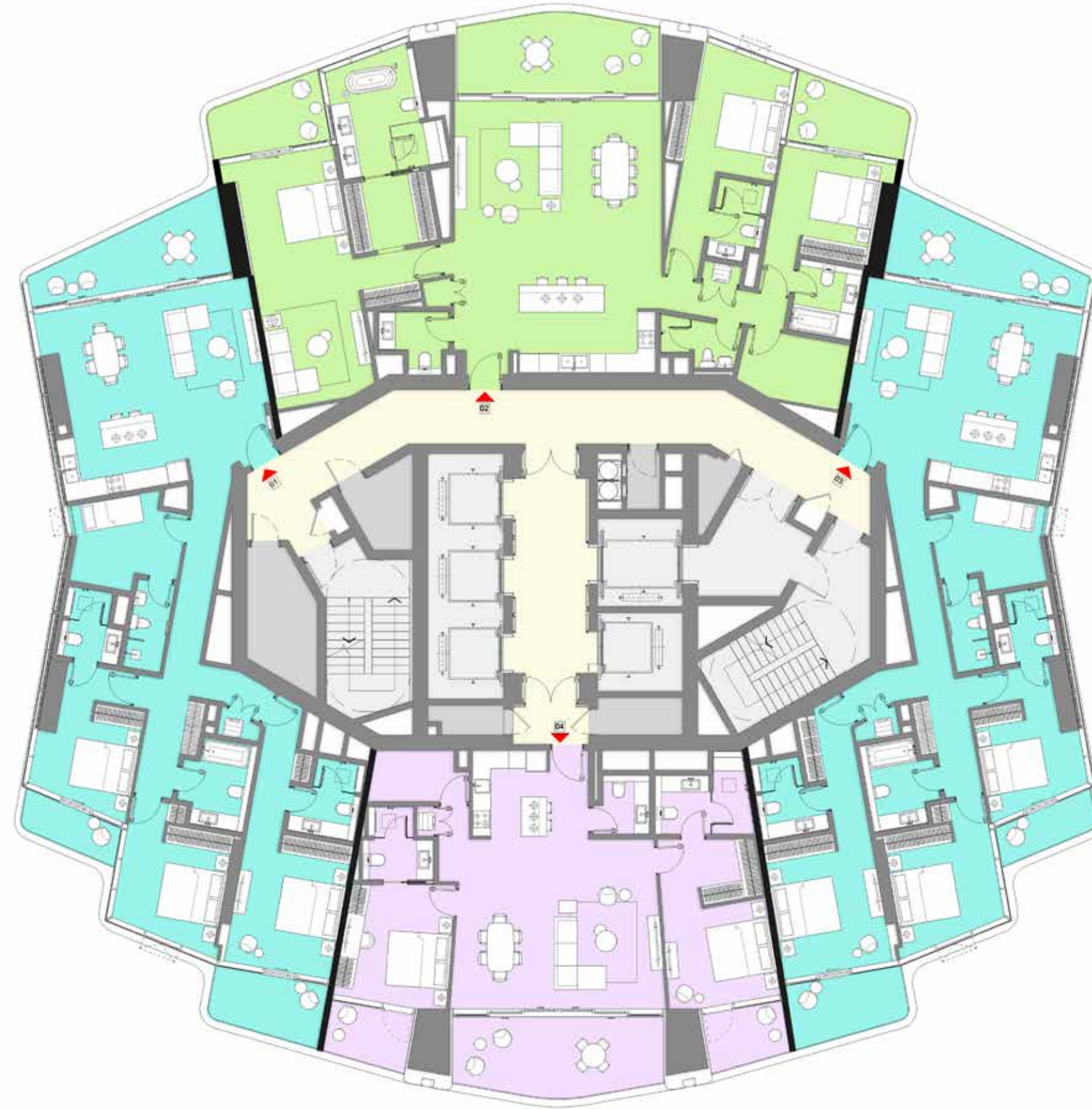
1 & 3 Bedroom Units

1 BR-A	(07)
1 BR-B1	(02, 04)
1 BR-C1	(06, 08)
1 BR-C2	(03)
3 BR	(01, 05)



LIV
LUX





TYPICAL FLOORPLANS

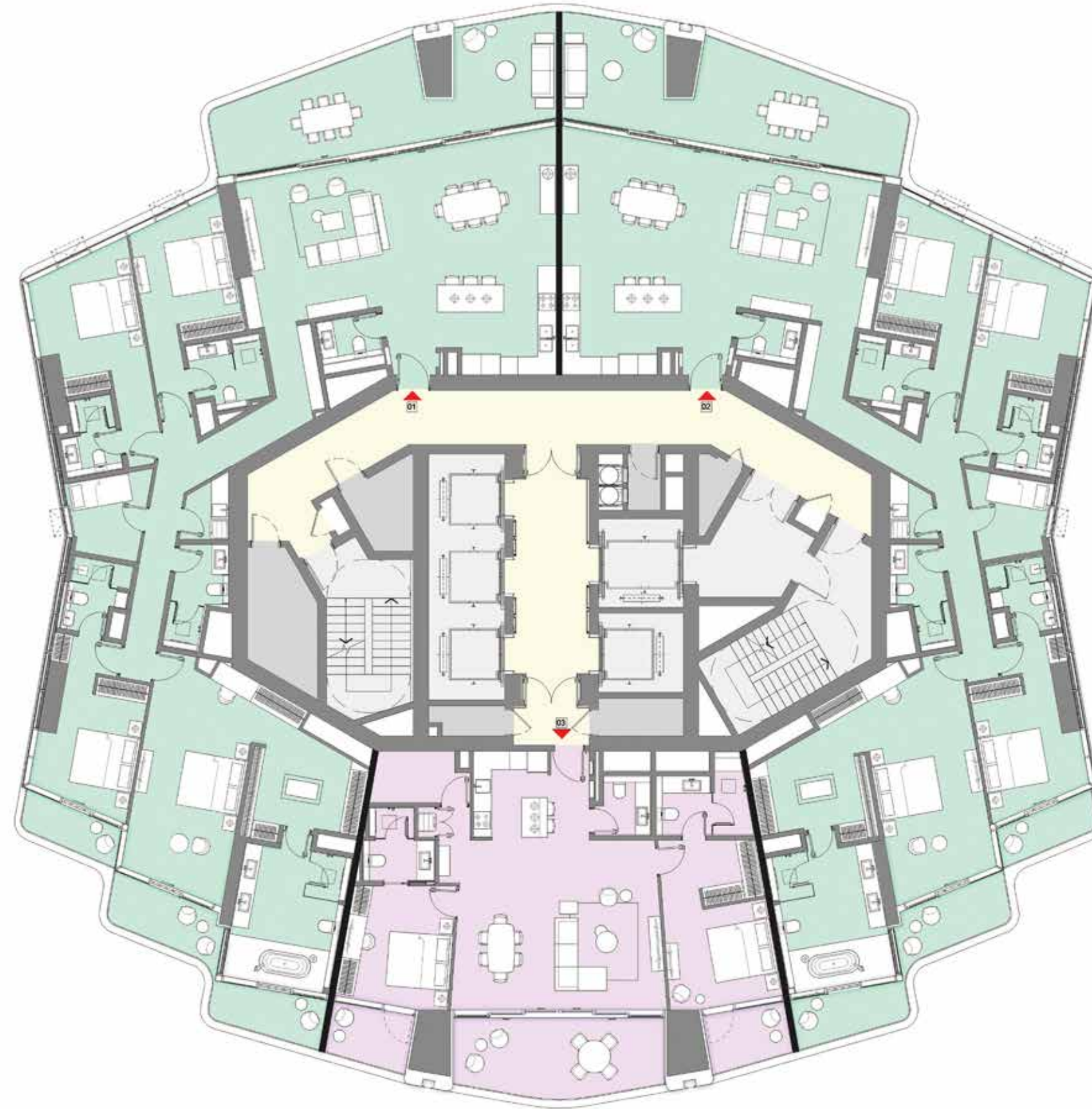
Signature Residential Levels

Levels 34 - 39

2 & 3 Bedroom Signature Units

- 2 BR-Signature (04)
- 3 BR-Signature (01, 03)
- 3 BR-Signature (02)





TYPICAL FLOORPLANS

Signature Residential Levels

Levels 40 - 41

4 Bedroom Signature Units

2 Bedroom Signature Units

- | | |
|----------------|----------|
| 4 BR-Signature | (01, 02) |
| 2 BR-Signature | (03) |







LIV
LUX

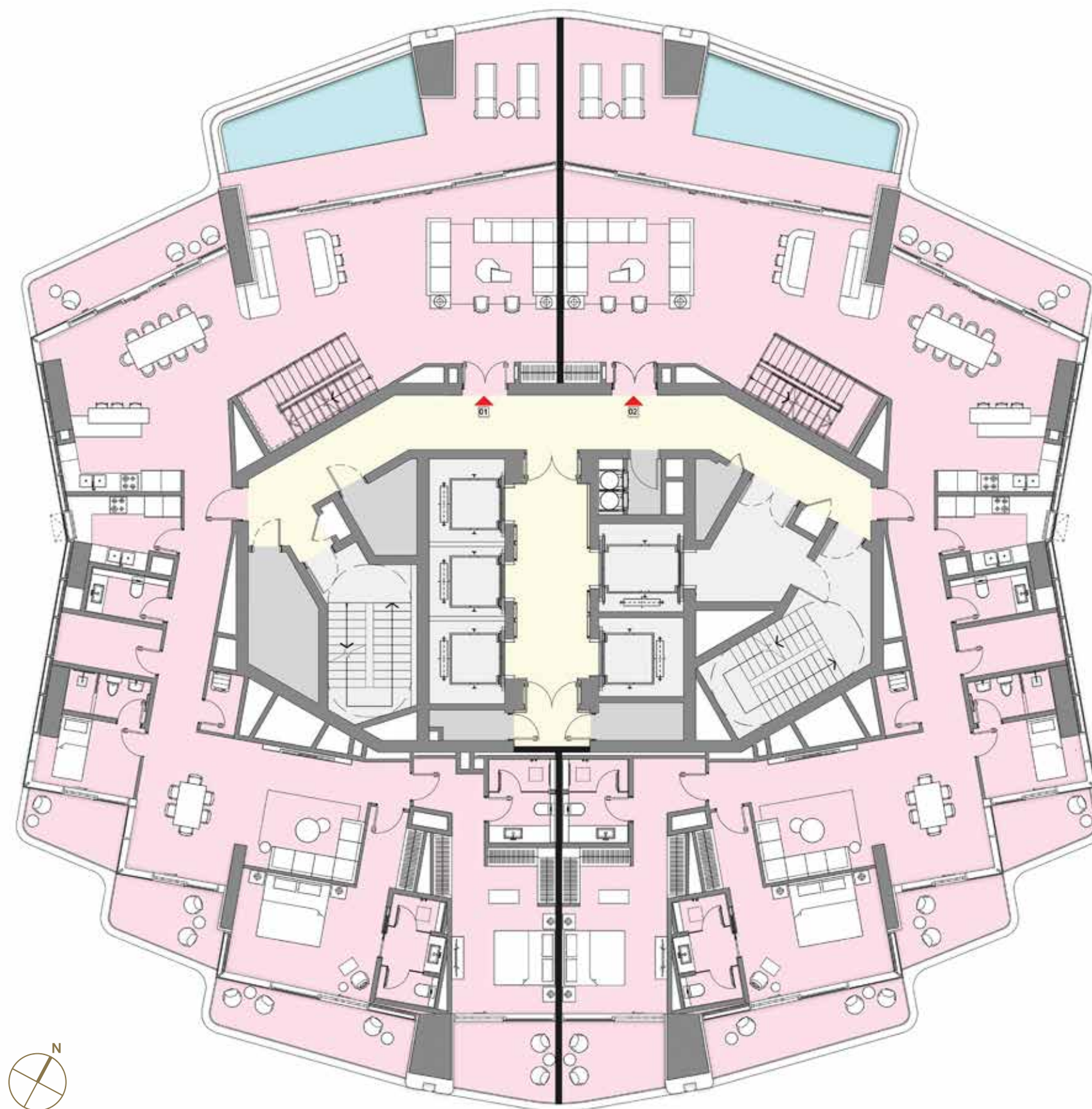
TYPICAL FLOORPLANS

Penthouse Levels

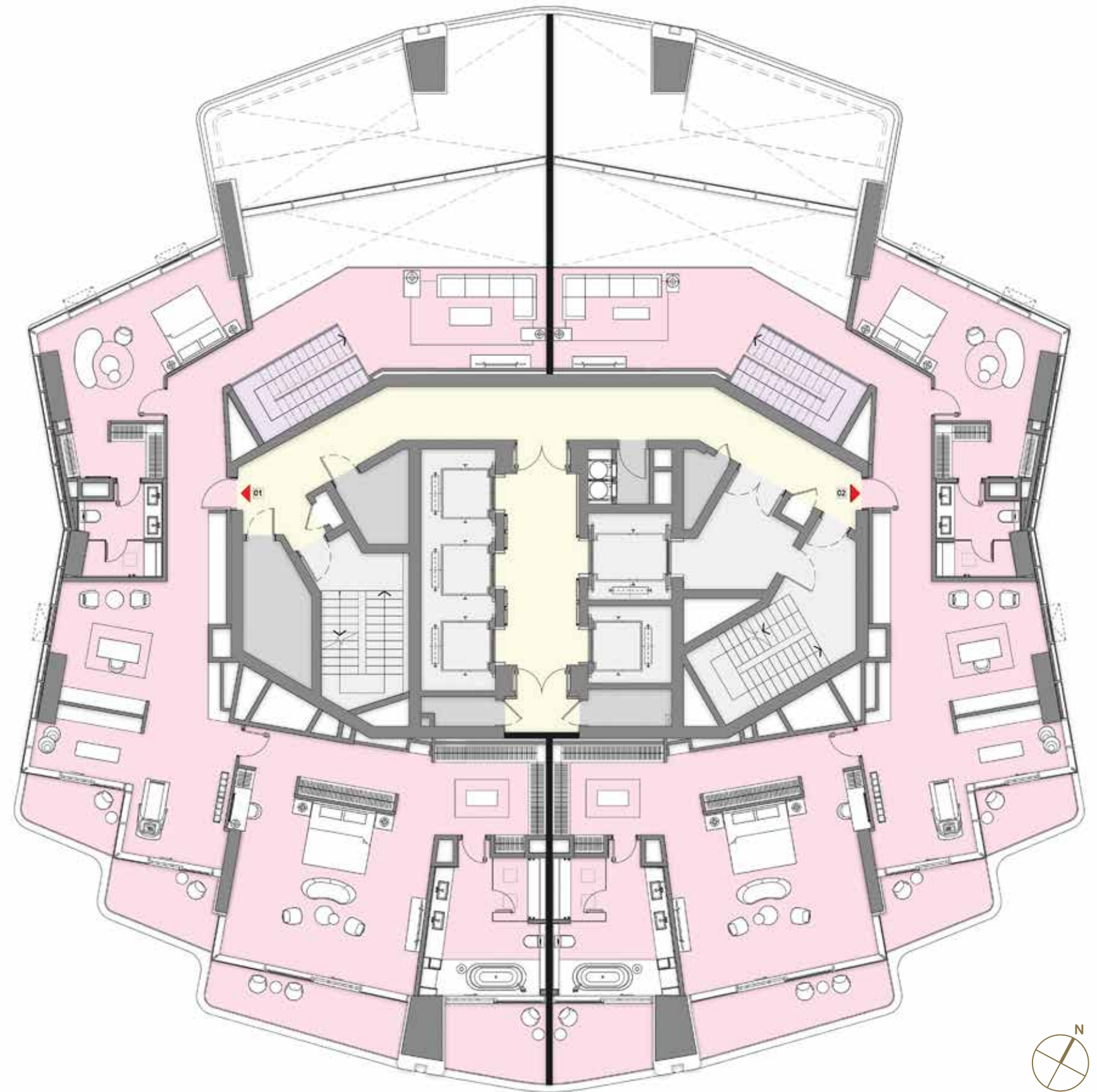
Levels 42 - 45

4 Bedroom Duplex Penthouses

(UNITS 01, 02)



PENTHOUSE LOWER FLOOR



PENTHOUSE UPPER FLOOR



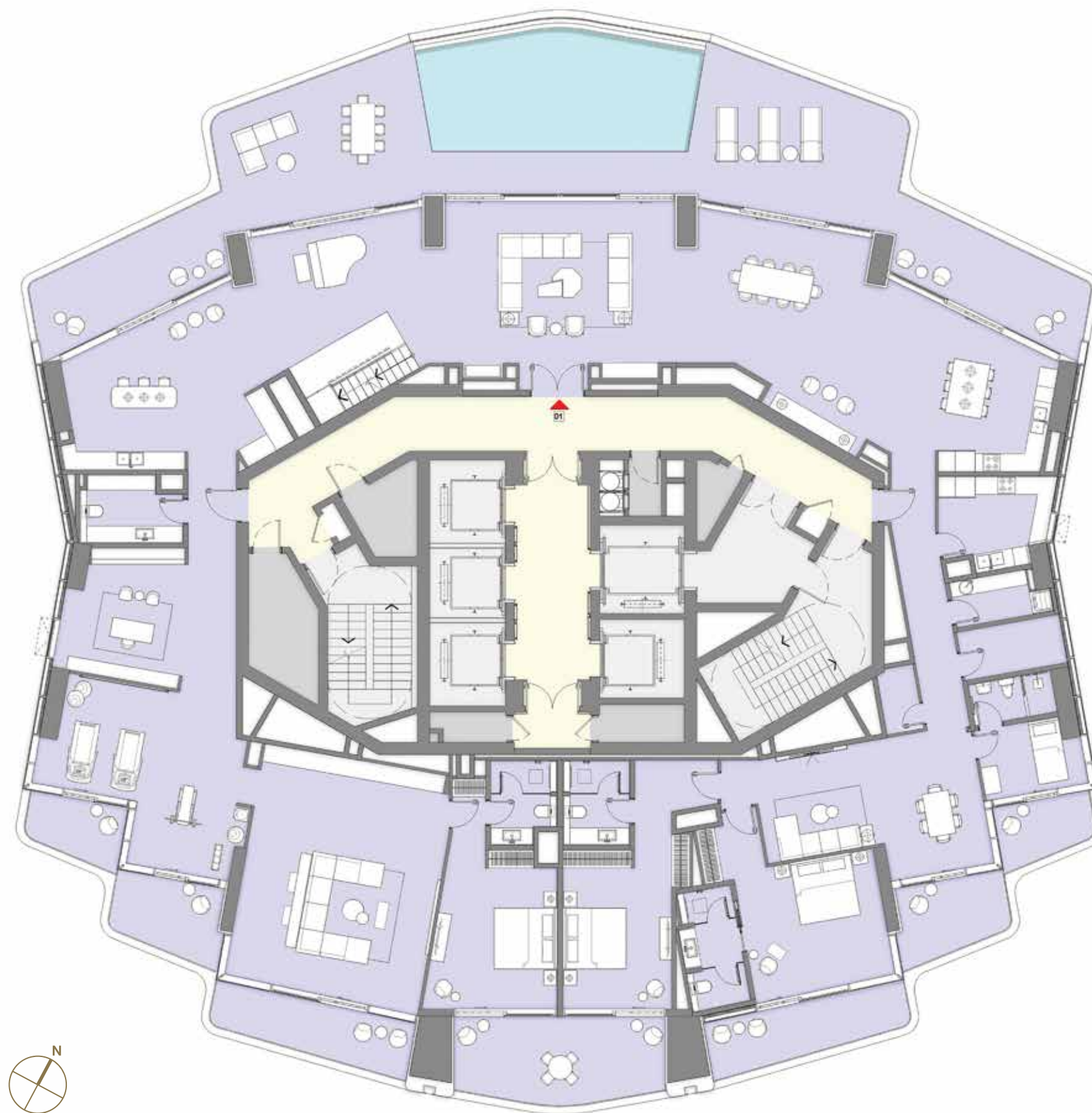
LIV
LUX

TYPICAL FLOORPLANS

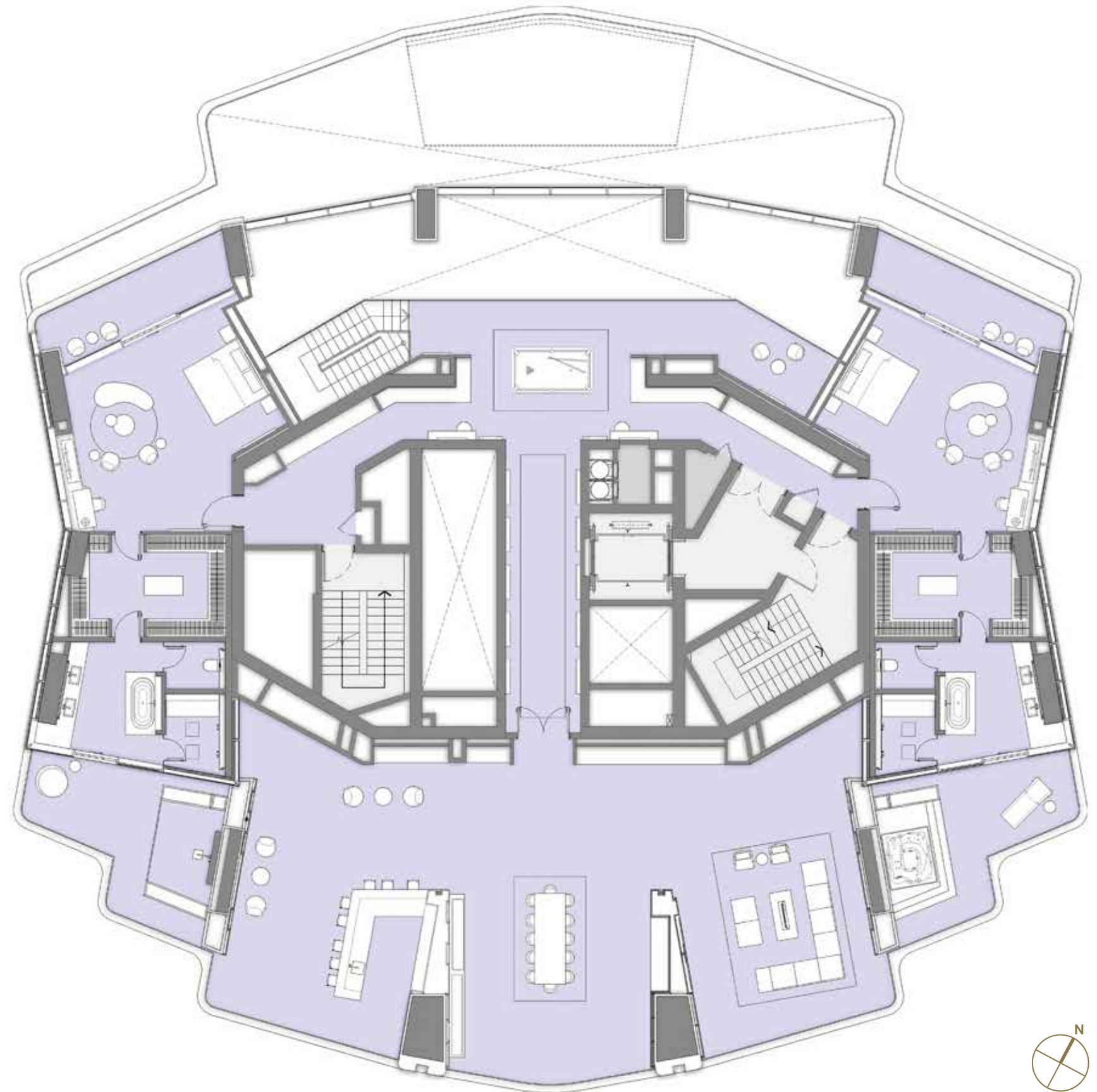
Penthouse Levels

Levels 46 - 47

5 Bedroom
Duplex Superlux Penthouse



SUPERLUX PENTHOUSE LOWER FLOOR



SUPERLUX PENTHOUSE UPPER FLOOR





LIV the LUX Lifestyle

livuae.com

All views are indicative and where photographs of actual views have been taken, these are current at the time of publication of this brochure and any other marketing materials. Marina LIV Development is not responsible for any future changes in the surrounding built up environment that may effect the views depicted. The images of finishes shown are indicative of design intent and actual materials and finishes may differ.



**LIV
LUX**

CALL 800 LIV (548)

livuae.com