



CONCEPT 7
RESIDENCES
BY CONDOR

A NEW WAY TO LIVE

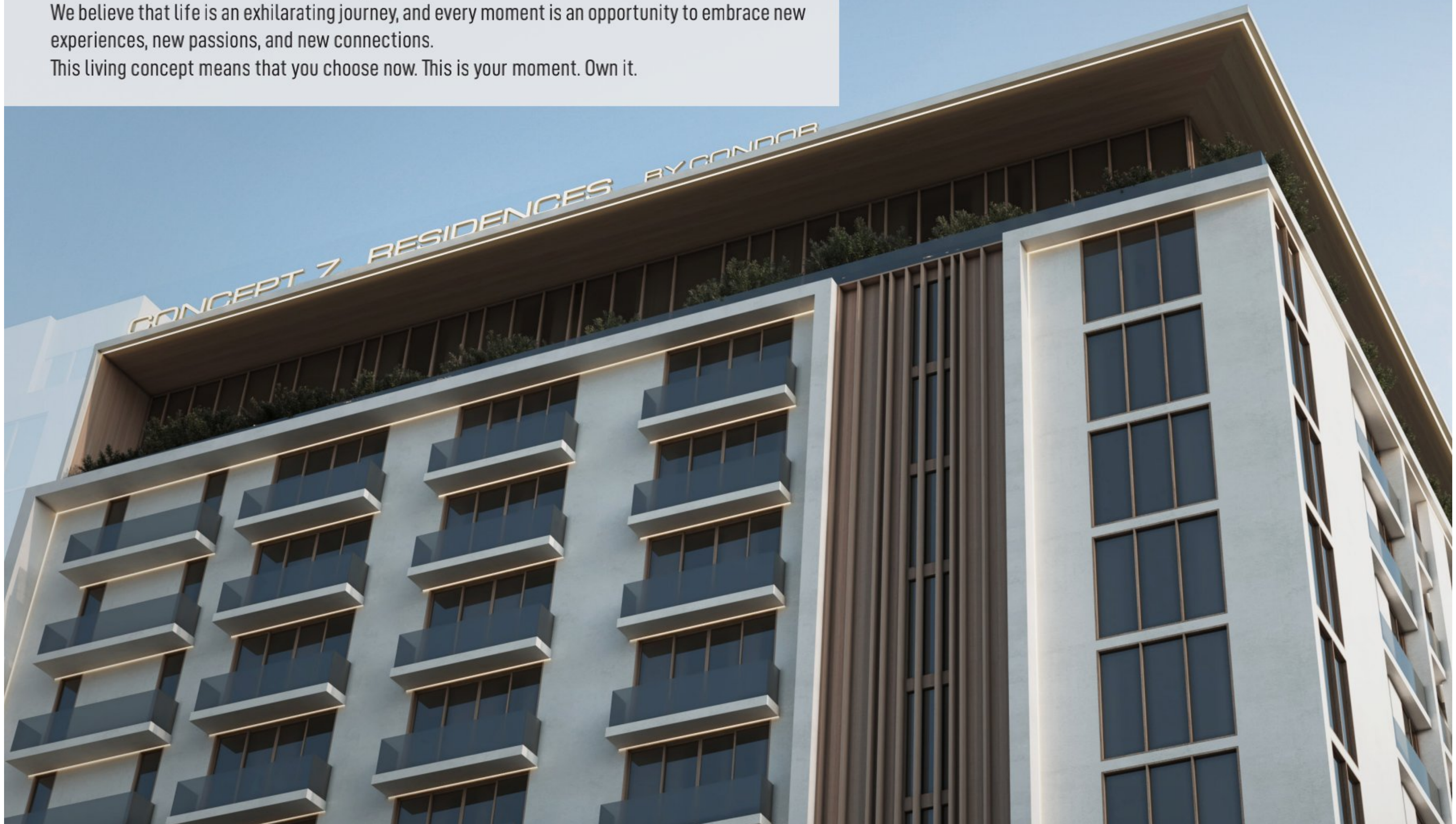
THIS IS LIVING.
THIS IS YOUR MOMENT.



A NEW IDEA, A NEW CONCEPT

Welcome to Concept 7 where your story, your outlook, your future can change in just a few moments. Concept 7 is not just a building, it is a new way to think, and a new concept for living life. We believe that life is an exhilarating journey, and every moment is an opportunity to embrace new experiences, new passions, and new connections.

This living concept means that you choose now. This is your moment. Own it.



CONCEPT 7 RESIDENCES

WELCOME HOME TO CONCEPT 7 RESIDENCES

Studio, 1 and 2 bedroom apartments in the heart of Jumeirah Village Circle.



CONCEPT 7
RESIDENCES
BY CONDOR

DISCOVER DUBAI

Remarkably positioned as the world's most innovative and investor-friendly city with a truly international population. Indulge in a world where your investments thrive and your aspirations find a home – right here in Dubai.



JUMERIAH VILLAGE CIRCLE

Experience the ultimate convenience in Jumeirah Village Circle. The Circle Mall and Jumeirah Village Circle Park are moments away, offering a unique blend of shopping, dining, and outdoor activities. With 30 planned landscaped parks, 18 children's play areas, jogging tracks, and a cycling track on the horizon, this district caters to your active lifestyle.



NEARBY PLACES

Steps away from Circle Mall | Easy access to the main entry and exit points of JVC



Circle Mall
01 minutes



Dubai Marina
18 minutes



JSS International school
04 minutes



Palm Jumeirah
19 minutes



Motor City
05 minutes (2.5km)



Burj - Khalifa
20 minutes (21.00km)



City Center Me'aisem
10 minutes



Business Bay
20 minutes

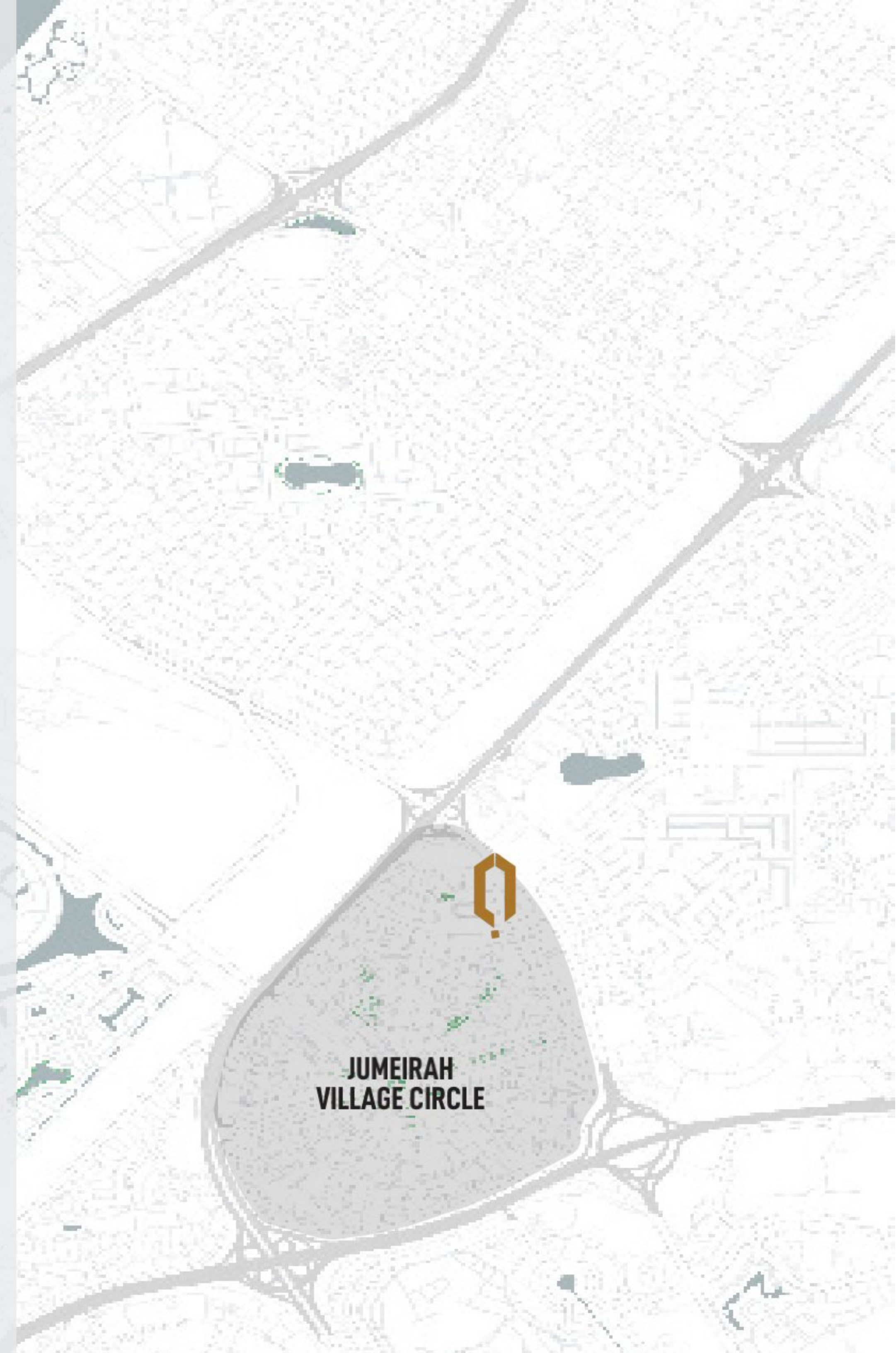


Mall of the Emirates
15 minutes



Dubai International Airport
29 minutes

Situated advantageously, this prime positioning makes it an ideal destination for a hassle-free lifestyle. Concept 7 lies just 15 minutes away from Al Maktoum International Airport and a mere 29 minutes from Dubai International Airport.





CHOOSE A PATH, ELEVATE YOUR STYLE

Experience community connections where you can thrive together, all in just moments away from your vibrant neighbourhood.



HIGH STYLE FURNISHED LIVING

Make the decision where your dream furnished living becomes a reality. With an unwavering commitment to quality, every element, from materials to craftsmanship, exudes excellence. Step into stylish and vibrant interiors that invigorate your senses, creating a space truly your own.

CONCEPT 7

An aerial, high-angle photograph of a modern outdoor pool area. The pool is rectangular with a light-colored, pebble-patterned tile floor. It is surrounded by a wide deck made of light-colored wood planks. To the left of the pool, there are several lounge chairs with light-colored cushions, some of which are partially obscured by the fronds of palm trees. The palm trees are planted in raised wooden planters. The overall scene is well-lit, suggesting a sunny day, and the architecture is clean and contemporary.

DRIVE YOUR BUSINESS, DIVE INTO YOUR POOL

Indulge in amenities beyond compare, where unparalleled luxuries await, elevating your experience in just a few moments.



DIVE INTO TRANQUILITY

Immerse yourself in a stunning adult pool surrounded by serene cabanas with a separate kids pool.





CRAFT THAT EMAIL

Fuel your productivity and creativity in thoughtfully designed co-working spaces.



BOUNDLESS JOY

A place for your furry companions. Find joy in pet play areas tailored for their activity.



CURATE YOUR NEW HOME VISION

Indulge in a premium living experience where every moment is crafted to perfection. Our soft earth palette envelopes you in a sense of belonging. Every room is meticulously curated to bathe in the richness of natural light, giving rise to a space that is not just elegantly simple and impeccably clean, but also exudes an inviting warmth.

APARTMENT HIGHLIGHTS

- Spacious Rooms
- Premium Fixtures and Fittings
- Contemporary Ecru Designed Interiors
- Turnkey, Fully Furnished and Fully Equipped
- Private Balconies
- Architectural Design Excellence
- Dedicated Reserved Parking Spaces





THIS LIVING CONCEPT MEANS YOU CHOOSE NOW

Discover a space that's not just stunning, but uniquely you. Step into a sunlit sanctuary, where simplicity meets perfection in a natural glow. Live in the lap of luxury where every instant is designed for comfort and style. This is living. This is your moment.

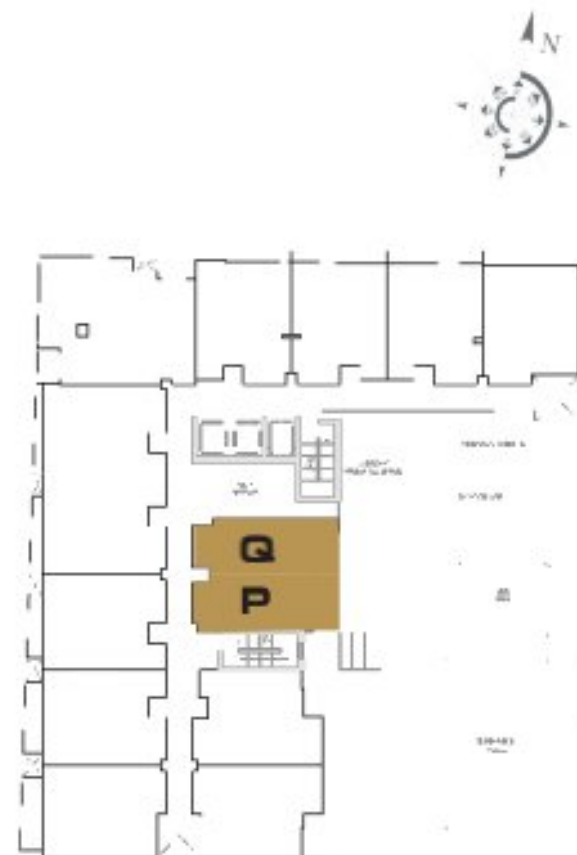
FURNISHED STUDIO

STUDIO APARTMENT TYPE 1



FLOORS: 1st Floor

| SI | INTERIOR AREA (Sq. Ft) | BALCONY AREA (Sq. Ft) | NET AREA (Sq. Ft) |
|--------------|------------------------------|-----------------------------|-------------------------|
| P | 395.68 | 93.22 | 488.90 |
| Q | 390.41 | 90.85 | 481.25 |
| AVG. AREA | 393.05 | 92.04 | 485.09 |



All pictures, plans, layouts, information, data and details included in this brochure are indicative only and may change at any time in accordance with the final designs of the project and regulatory approvals. Drawings are not to scale, furniture & decor for illustrative purpose.

STUDIO APARTMENT TYPE 2



FLOORS: 2nd Floor - 10th Floor
INTERIOR AREA: 347.03 sq.ft
BALCONY AREA: 45.32 sq.ft
NET AREA: 392.34 sq.ft



All pictures, plans, layouts, information, data and details included in this brochure are indicative only and may change at any time in accordance with the final designs of the project and regulatory approvals. Drawings are not to scale, furniture & decor for illustrative purpose.

STUDIO APARTMENT TYPE 3



FLOORS: 2nd Floor - 10th Floor
INTERIOR AREA: 395.90 sq.ft
BALCONY AREA: 0.00 sq.ft
NET AREA: 395.90 sq.ft



All pictures, plans, layouts, information, data and details included in this brochure are indicative only and may change at any time in accordance with the final designs of the project and regulatory approvals. Drawings are not to scale, furniture & decor for illustrative purpose.



FURNISHED ONE BEDROOM



ONE BEDROOM APARTMENT TYPE 1



FLOORS: 1st Floor - 8th Floor

| SI | INTERIOR AREA (Sq. Ft) | BALCONY AREA (Sq. Ft) | NET AREA (Sq. Ft) |
|-----------|------------------------|-----------------------|-------------------|
| L | 678.45 | 75.56 | 754.01 |
| K | 682.65 | 51.56 | 734.21 |
| J | 674.04 | 52.10 | 726.13 |
| I | 679.10 | 31.65 | 710.74 |
| B | 669.30 | 32.83 | 702.13 |
| C | 660.15 | 37.57 | 697.72 |
| D | 653.91 | 41.87 | 695.78 |
| AVG. AREA | 671.09 | 46.16 | 717.25 |



All pictures, plans, layouts, information, data and details included in this brochure are indicative only and may change at any time in accordance with the final designs of the project and regulatory approvals. Drawings are not to scale, furniture & decor for illustrative purpose.

ONE BEDROOM APARTMENT TYPE 2



FLOORS: 1st Floor - 8th Floor

| SI | INTERIOR AREA (Sq. Ft) | BALCONY AREA (Sq. Ft) | NET AREA (Sq. Ft) |
|-----------|------------------------|-----------------------|-------------------|
| E | 646.80 | 51.13 | 697.93 |
| M | 647.45 | 101.93 | 749.38 |
| AVG. AREA | 647.13 | 76.53 | 723.66 |



All pictures, plans, layouts, information, data and details included in this brochure are indicative only and may change at any time in accordance with the final designs of the project and regulatory approvals. Drawings are not to scale, furniture & decor for illustrative purpose.

ONE BEDROOM APARTMENT TYPE 3



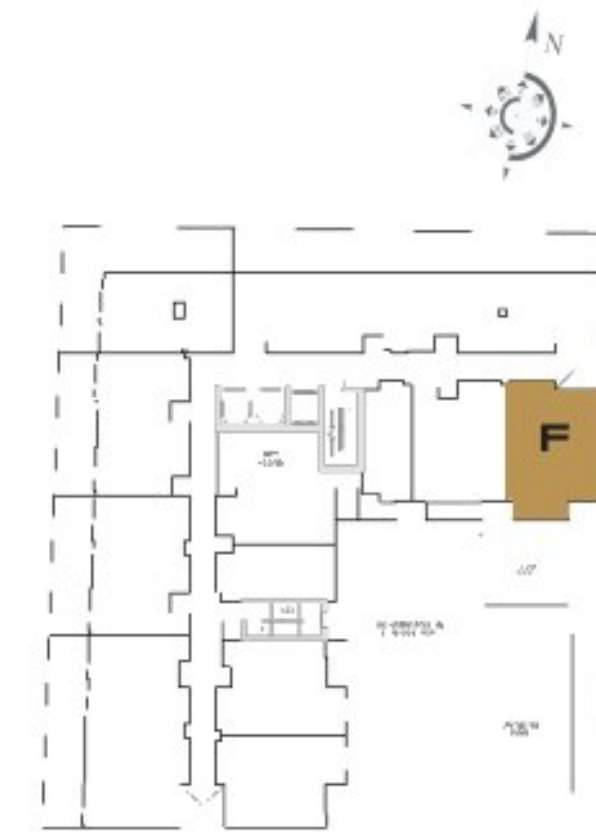
FLOORS: 2nd Floor - 10th Floor
INTERIOR AREA: 647.23 sq.ft
BALCONY AREA: 62.97 sq.ft
NET AREA: 710.20 sq.ft



ONE BEDROOM APARTMENT TYPE 4



FLOORS: 2nd Floor - 10th Floor
INTERIOR AREA: 659.94 sq.ft
BALCONY AREA: 66.09 sq.ft
NET AREA: 726.03 sq.ft



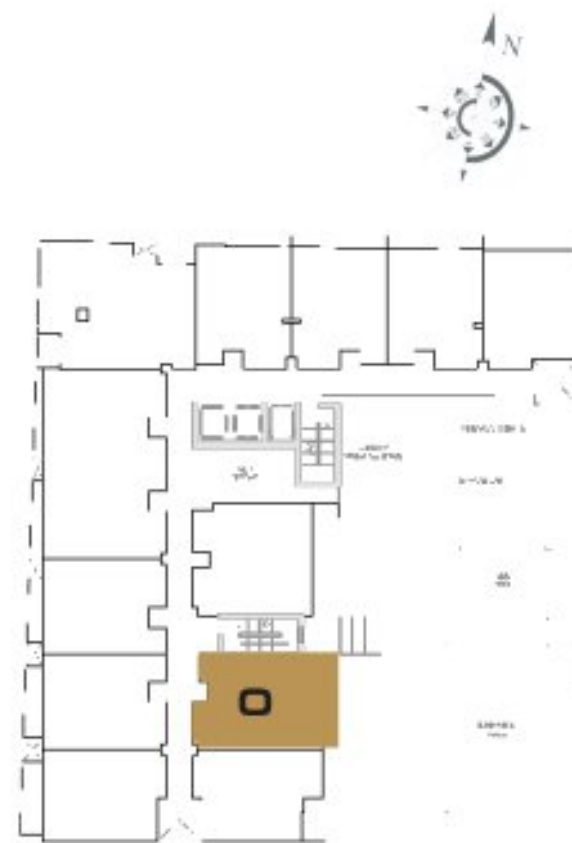
All pictures, plans, layouts, information, data and details included in this brochure are indicative only and may change at any time in accordance with the final designs of the project and regulatory approvals. Drawings are not to scale, furniture & decor for illustrative purpose.

All pictures, plans, layouts, information, data and details included in this brochure are indicative only and may change at any time in accordance with the final designs of the project and regulatory approvals. Drawings are not to scale, furniture & decor for illustrative purpose.

ONE BEDROOM APARTMENT TYPE 5



FLOORS: 1st Floor - 10th Floor
INTERIOR AREA: 655.52 sq.ft
BALCONY AREA: 153.06 sq.ft
NET AREA: 808.58 sq.ft



All pictures, plans, layouts, information, data and details included in this brochure are indicative only and may change at any time in accordance with the final designs of the project and regulatory approvals. Drawings are not to scale, furniture & decor for illustrative purpose.

ONE BEDROOM APARTMENT TYPE 6

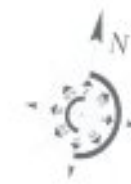


FLOORS: 1st Floor to 10th Floor
INTERIOR AREA: 631.63 sq.ft
BALCONY AREA: 144.67 sq.ft
NET AREA: 776.29 sq.ft



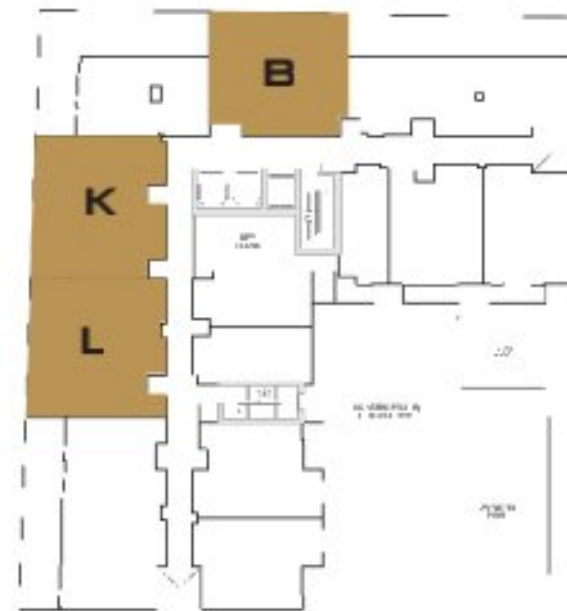
All pictures, plans, layouts, information, data and details included in this brochure are indicative only and may change at any time in accordance with the final designs of the project and regulatory approvals. Drawings are not to scale, furniture & decor for illustrative purpose.

ONE BEDROOM APARTMENT TYPE 7

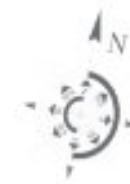


FLOORS: 9th Floor

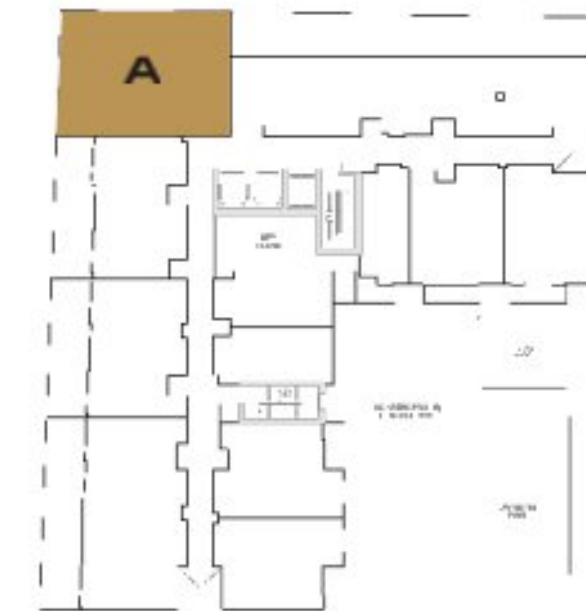
| SI | INTERIOR AREA (Sq. Ft) | BALCONY AREA (Sq. Ft) | NET AREA (Sq. Ft) |
|--------------|------------------------------|-----------------------------|-------------------------|
| L | 774.14 | 329.91 | 1104.05 |
| K | 746.91 | 331.21 | 1078.11 |
| B | 633.56 | 362.53 | 996.09 |
| AVG. AREA | 718.20 | 341.22 | 1059.42 |



ONE BEDROOM APARTMENT TYPE 8



FLOORS: 9th Floor
INTERIOR AREA: 619.36 sq.ft
BALCONY AREA: 656.38 sq.ft
NET AREA: 1275.74 sq.ft



All pictures, plans, layouts, information, data and details included in this brochure are indicative only and may change at any time in accordance with the final designs of the project and regulatory approvals. Drawings are not to scale, furniture & decor for illustrative purpose.

All pictures, plans, layouts, information, data and details included in this brochure are indicative only and may change at any time in accordance with the final designs of the project and regulatory approvals. Drawings are not to scale, furniture & decor for illustrative purpose.

ONE BEDROOM APARTMENT TYPE 9



FLOORS: 10th Floor

| SI | INTERIOR AREA (Sq. Ft) | BALCONY AREA (Sq. Ft) | NET AREA (Sq. Ft) |
|--------------|------------------------------|-----------------------------|-------------------------|
| L | 774.14 | 00 | 774.14 |
| K | 746.91 | 00 | 746.91 |
| B | 633.56 | 00 | 633.56 |
| AVG. AREA | 718.20 | 00 | 718.20 |



All pictures, plans, layouts, information, data and details included in this brochure are indicative only and may change at any time in accordance with the final designs of the project and regulatory approvals. Drawings are not to scale, furniture & decor for illustrative purpose.

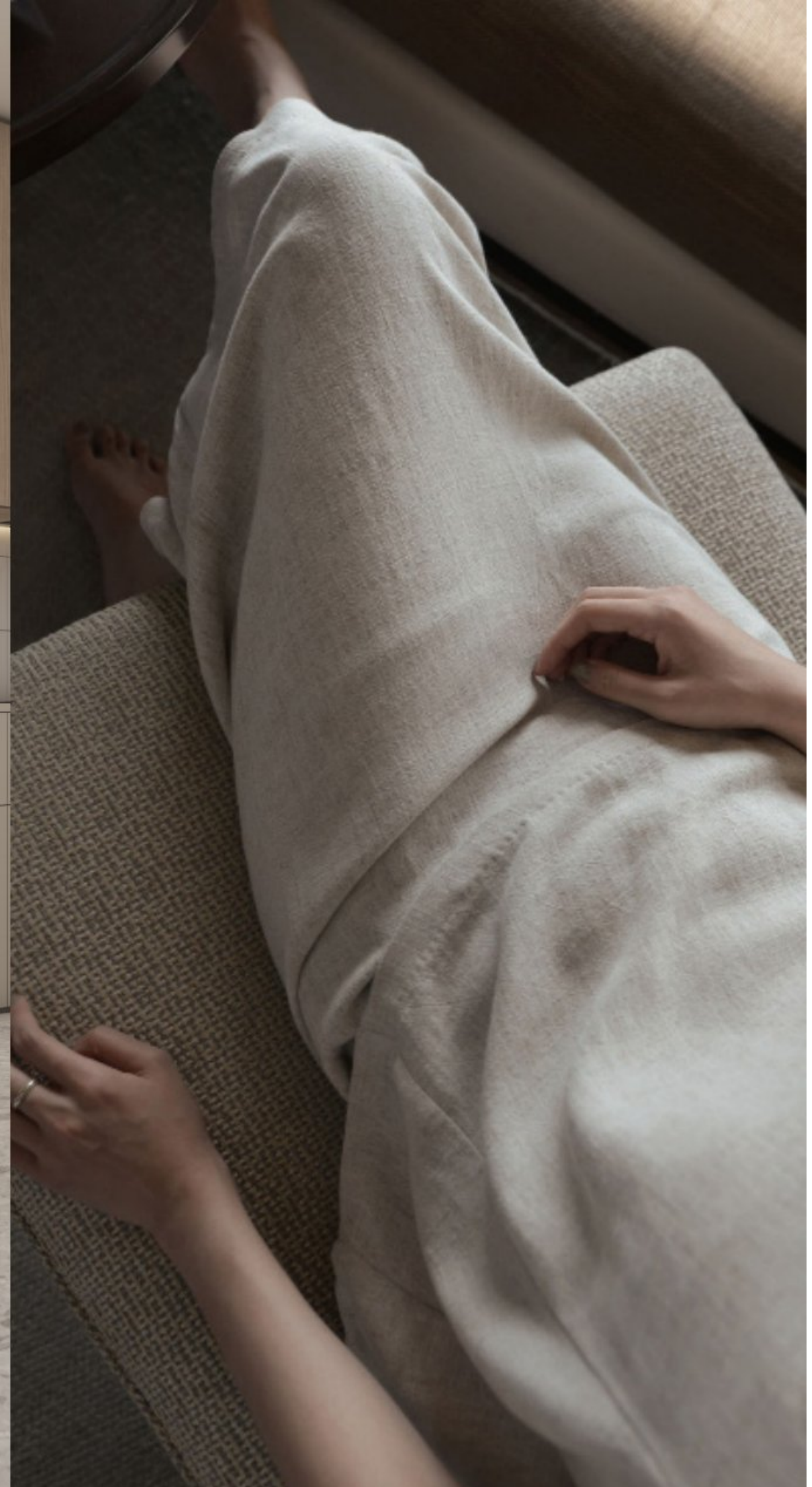
ONE BEDROOM APARTMENT TYPE 10



FLOORS: 10th Floor
INTERIOR AREA: 619.36 sq.ft
BALCONY AREA: 0.00 sq.ft
NET AREA: 619.36 sq.ft



All pictures, plans, layouts, information, data and details included in this brochure are indicative only and may change at any time in accordance with the final designs of the project and regulatory approvals. Drawings are not to scale, furniture & decor for illustrative purpose.

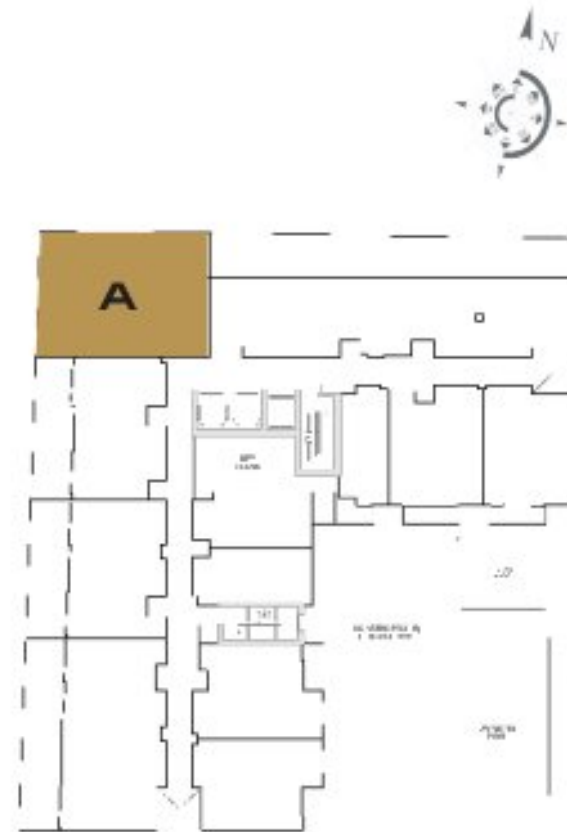


FURNISHED TWO BEDROOM

TWO BEDROOM APARTMENT TYPE 1



FLOORS: 1st Floor - 8th Floor
INTERIOR AREA: 1053.25 sq.ft
BALCONY AREA: 95.05 sq.ft
NET AREA: 1148.29 sq.ft



All pictures, plans, layouts, information, data and details included in this brochure are indicative only and may change at any time in accordance with the final designs of the project and regulatory approvals. Drawings are not to scale, furniture & decor for illustrative purpose.

TWO BEDROOM APARTMENT TYPE 2



FLOORS: 9th Floor
INTERIOR AREA: 1016.22 sq.ft
BALCONY AREA: 557.57 sq.ft
NET AREA: 1573.79 sq.ft



All pictures, plans, layouts, information, data and details included in this brochure are indicative only and may change at any time in accordance with the final designs of the project and regulatory approvals. Drawings are not to scale, furniture & decor for illustrative purpose.

TWO BEDROOM APARTMENT TYPE 3



FLOORS: 9th Floor
INTERIOR AREA: 1139.68 sq.ft
BALCONY AREA: 458.33 sq.ft
NET AREA: 1598.01 sq.ft

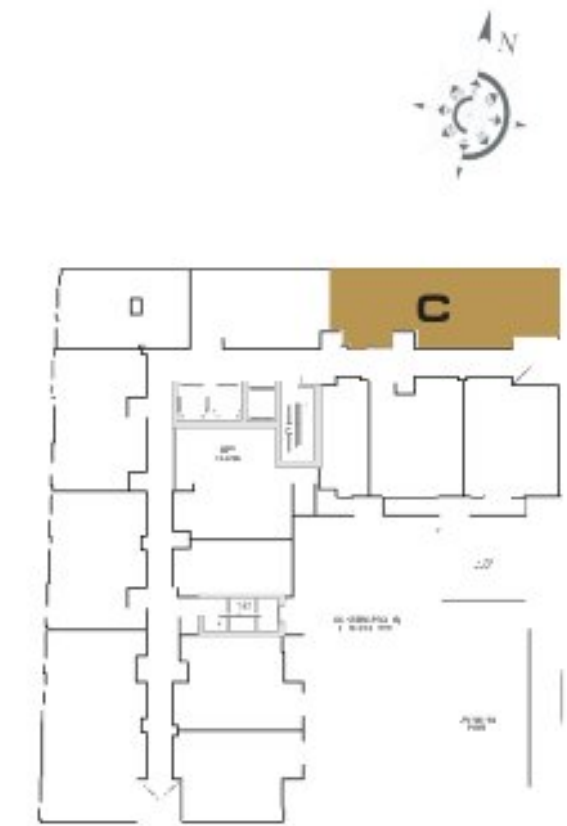


All pictures, plans, layouts, information, data and details included in this brochure are indicative only and may change at any time in accordance with the final designs of the project and regulatory approvals. Drawings are not to scale, furniture & decor for illustrative purpose.

TWO BEDROOM APARTMENT TYPE 4



FLOORS: 10th Floor
INTERIOR AREA: 1016.22 sq.ft
BALCONY AREA: 0.00 sq.ft
NET AREA: 1016.22 sq.ft



All pictures, plans, layouts, information, data and details included in this brochure are indicative only and may change at any time in accordance with the final designs of the project and regulatory approvals. Drawings are not to scale, furniture & decor for illustrative purpose.

TWO BEDROOM APARTMENT TYPE 5



FLOORS: 10th Floor
 INTERIOR AREA: 1139.68 sq.ft
 BALCONY AREA: 0.00 sq.ft
 NET AREA: 1139.68 sq.ft



All pictures, plans, layouts, information, data and details included in this brochure are indicative only and may change at any time in accordance with the final designs of the project and regulatory approvals. Drawings are not to scale, furniture & decor for illustrative purpose.











